

How to Sew your Dress:

1. Sew bodice to lining right sides together. (fig. 1)
2. Clip curves. Turn right side out and press. (fig. 2)
3. Sew underarm seams right sides together. (fig. 2)
4. Press hem and back seam tab in 1/4" toward wrong side. Hem bottom edge and back seam tab. Baste loosely along top edge. (fig. 3)
5. Pull basted strings to hand-gather waistline. (fig. 4)
6. Lay bodice on top of gathered skirt, matching raw edges and centers of designs, right sides together, and sew. (fig. 5)
7. With dress inside-out, sew up back seam to bottom of back seam tab. (fig. 6)
8. Hand sew two snaps at back of bodice to close dress.

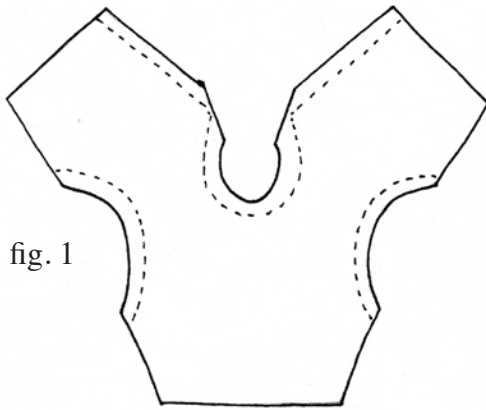


fig. 1

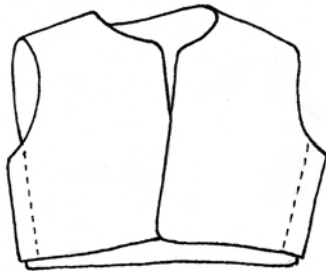


fig. 2

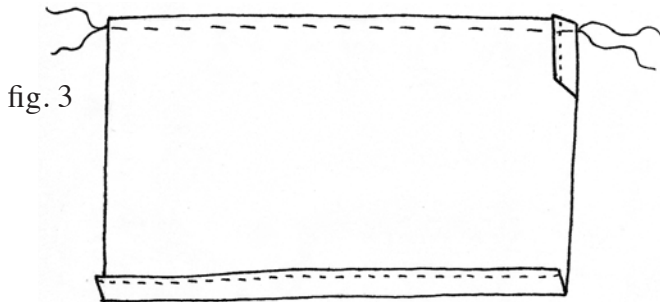


fig. 3

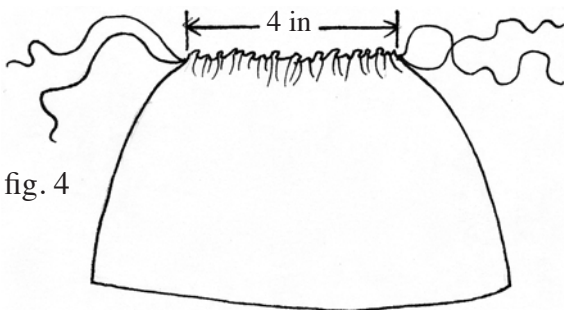


fig. 4

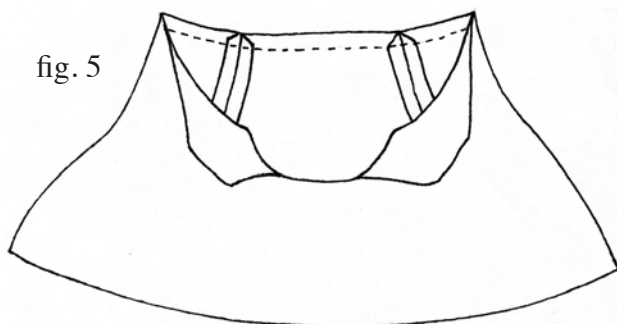


fig. 5

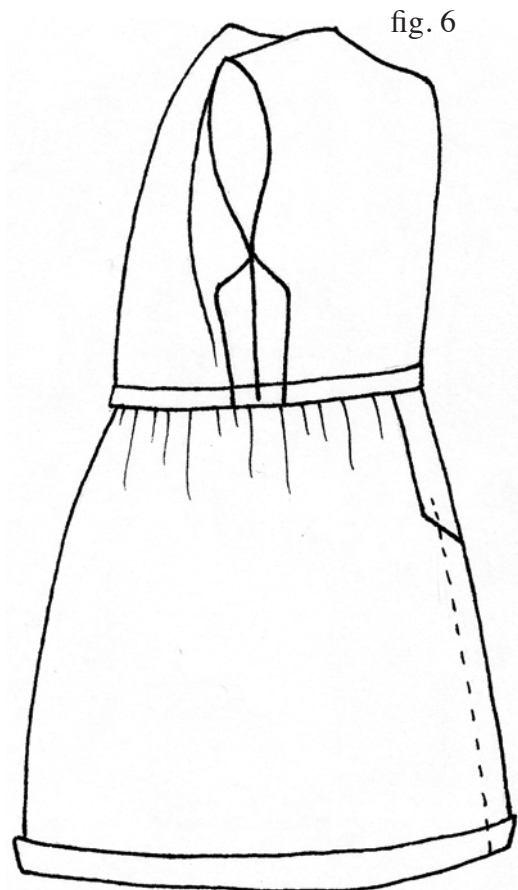


fig. 6

The Pattern:

Adapted from Skipper pattern 7716H
by Melissa Cabral

